



AUCTION

LEADING THE INDUSTRY SINCE 1945

Realtors • Auctioneers • Advisors

REAL ESTATE SELLS: TUESDAY – NOVEMBER 17, 2020 – 5:30 PM

28+-Acre Hide-A-Way Recreation Farm

Home – 64'x 67' Pole Barn – Pond

PERRY TWP – CARROLL CO. – CARROLLTON SCHOOLS

Online Bidding On Real Estate Available!

TRUCKS – TOOLS – HORSE TACK – RUG LOOM - ONLINE ONLY!

STARTS: WEDNESDAY – NOVEMBER 11, 2020 – 12:00 PM

(Visit www.kikoauctions.com for details and catalog)

ESTATE AUCTION, ALL SELLS TO SETTLE THE ESTATE. LOCATION:

6300 PLYMOUTH RD. SE, CARROLLTON, OH 44615

Directions: Take Rt. 332 south of Carrollton, OH or north of Rt.151 and Scio, OH to Plymouth Rd. and NE to address. Watch for KIKO signs!

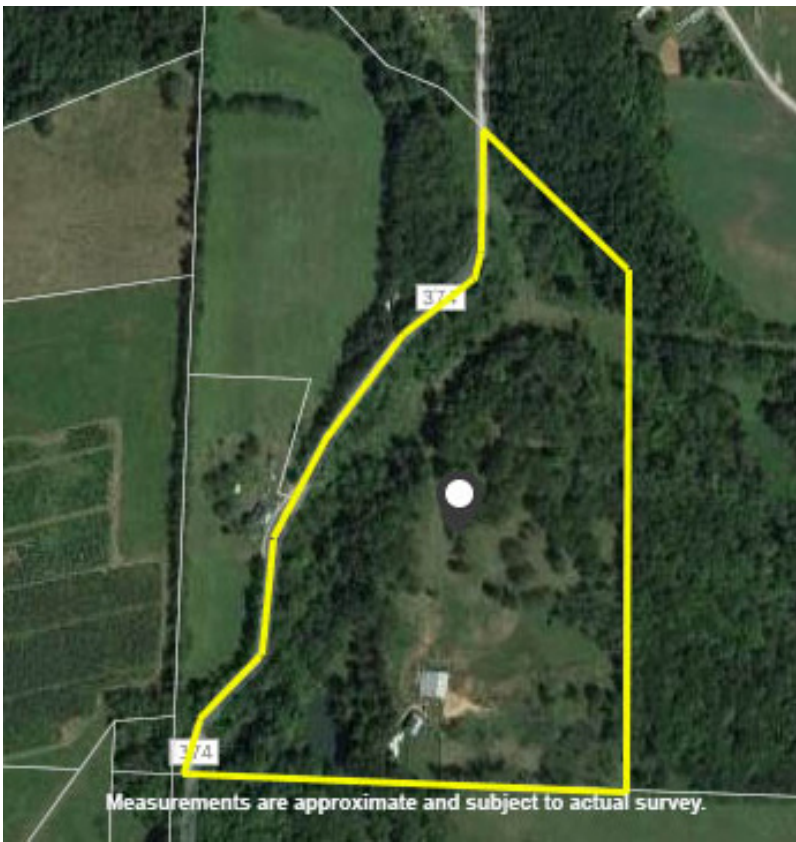


Information is believed to be accurate but not guaranteed. KIKO Auctioneers

800-533-5456 | kikoauctions.com



**REAL ESTATE PREVIEW: FRIDAY -
NOVEMBER 13, 2020 -
4:00-6:00 PM**



REAL ESTATE: Home, barn & pond on 28.25 acres open and wooded land with private location. Unfinished home features open kitchen/living room concept with two bedrooms and full bath on main level. Upstairs open with room for multiple rooms. 13-course block basement with man and garage doors, oil F/A heat and central air. Home is still needing cabinets, some framing and plumbing and electrical work. 64'x 67' barn w/ stalls and pasture runs. Property is a diamond in the rough needing cleaned up of debris around buildings. Bring your contractor with you to view home. For more information contact auctioneer.

REAL ESTATE TERMS: 10% down auction day, balance due at closing. A 10% buyer's premium will be added to the highest bid to establish the purchase price. Any desired inspections must be made prior to bidding. All information contained herein was derived from sources believed to be correct. Information is believed to be accurate but not guaranteed. Property to be sold as an entirety and not to be offered in separate parcels.



Auctioneer/Realtor®
EUGENE R. KIKO
330-495-0131
genokiko@kikocompany.com

800-533-5456 | kikoauctions.com

